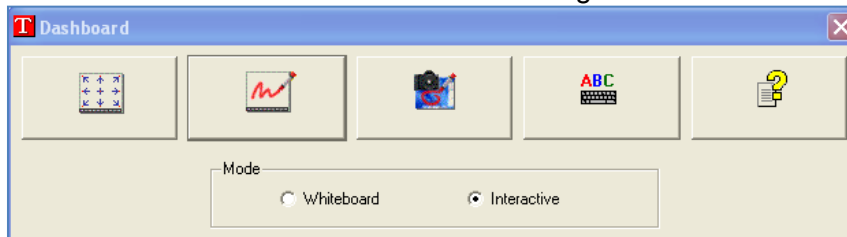


Using Teamboard as an Interactive Whiteboard

1. Connect Teamboard UTP cable to the computer USB port via the USB-UTP adapter.
2. Setup the projector and adjust the display area to cover the Teamboard drawing area.
3. The computer must be installed with Teamboard's driver and software. You may download them from our Intranet – <http://www.ipbl.edu.my/intra/sistem/iwb>
4. If the computer is already installed with the necessary software, the Teamboard Settings icon will be available on the Task Bar



5. Activate the Dashboard. Click Teamboard Settings icon and choose Dashboard.



6. Click the Calibrate Icon and select Interactive as type of calibration.
7. A grid will be displayed. Touch the points where the lines cross.
8. Once the calibration is done accurately, you can use it to control the computer.
9. If the Dashboard has been activated, it will be shown on the Taskbar when minimized. You can call it up by pressing it. You can also drag it around by pressing on its title bar and move it around.
10. Teamboard comes with a software called Teamboard Draw. To use it press on its icon on the Dashboard.
11. Learn how to use it by referring to the Help files.

